

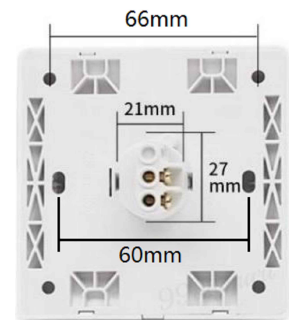
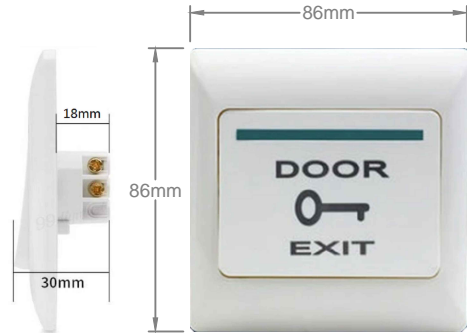
1. Description

The access control push button DEB-33ABS is a momentary push button with ABS plastic built-up for request to exit security door application.

2. Precautions



- Shut off all power before attempting any wiring procedures.
- Constantly be aware of pedestrian traffic around the area.
- Always stop pedestrian traffic through the doorway when performing tests that may result in unexpected reactions by the door.
- Always check placement of all wiring before powering up to insure that moving door parts will not catch any wires and cause damage to equipment.
- Ensure compliance with all applicable safety standards (i.e. ANSI A156.10 / 19) upon completion of installation.
- DO NOT attempt any internal repair of the product. All repairs and/or component replacements must be performed by authorized person :
 1. May jeopardize personal safety and may expose one to the risk of electrical shock.
 2. May adversely affect the safe and reliable performance of the product resulting in a voided warranty.



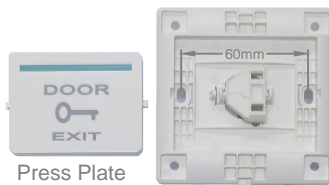
3. Installation on Single Gang Electrical Box

1. Dismantling Front Case using Flat Head Driver



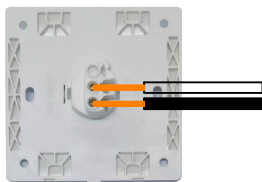
Front Case

2. Pull out the Press Plate using Flat Head Driver or Hand.

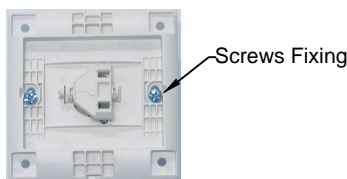


Press Plate

3. Connect Door Access Push Button Wires into the terminal connection. COM & NO.



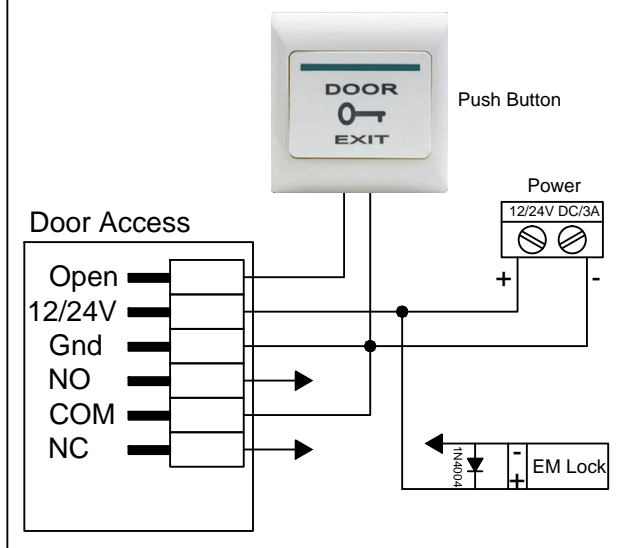
4. Fix the Push Button Body onto the Single Gang Electrical Box.



Screws Fixing

5. Reverse installation from the dismantling step; to cover back the Press Plate & Front Case.

Common Power Supply Diagram



Do not leave problems unresolved. If a satisfactory solution cannot be achieved after troubleshooting a problem, please call authorized person for assistant. Leave the door inoperable until satisfactory repairs can be made. Never sacrifice safe operations for an incomplete solution.

SECURITY . QUALITY . RELIABILITY